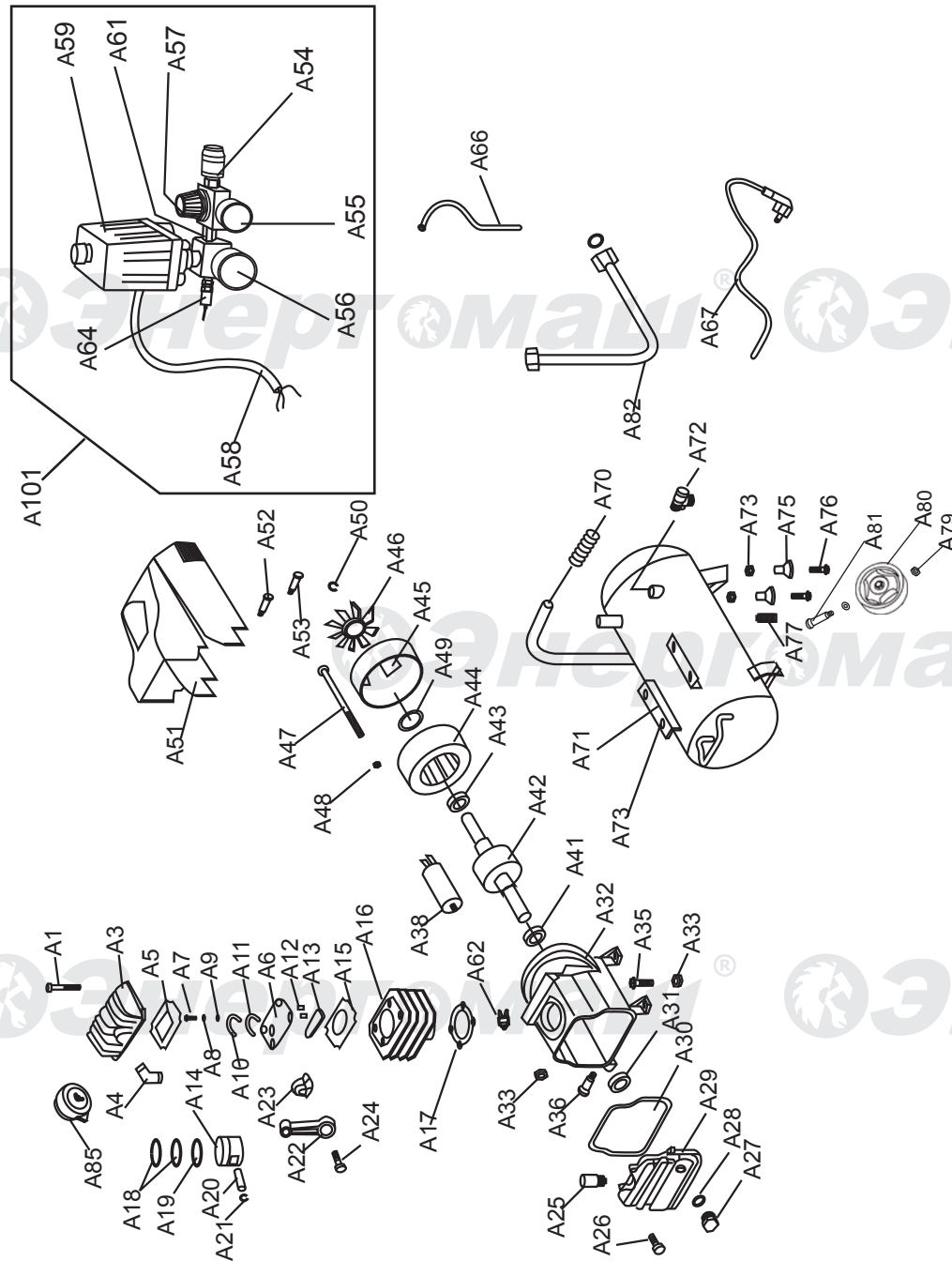


## BK-24 BK-50



NO.	DESCRIPTION	NO.	DESCRIPTION
A1	HEX BOLT WITH WASHER	A43	BEARING 6202
A3	CYLINDER HEAD	A44	STATOR WITH THERMAL PROTECTOR
A4	EXHAUST ELBOW	A45	REAR MOTOR COVER
A5	CYLINDER GASKET	A46	FAN
A6	VALVE PLATE	A47	HEX BOLT
A7	SCREW	A48	LOCK WASHER
A8	LOCKWASHER	A49	SPACER
A9	FLAT WASHER	A50	EXT RETAINING RING
A10	VALVE LIMITER	A51	FAN COVER
A11	VALVE REED	A52	HEX BOLT
A12	POSITION PIN	A53	SCREW
A13	INLET VALVE	A54	QUICK COUPLER
A14	PISTON	A55	PRESSURE GAUGE(LITTLE)
A15	CYLINDER GASKET UPPER	A56	PRESSURE GAUGE(BIG)
A16	CYLINDER	A57	REGULATOR VALVE
A17	CYLINDER GASKET LOWER	A58	INTERNAL WIRE
A18	COMPRESSION RING	A59	PRESSURE SWITCH
A19	OIL RING	A61	CONNECTOR
A20	PISTON PIN	A62	OVERLOAD PROTECTOR
A21	EXT RETAINING RING	A64	SAFETY VALVE
A22	CONNECTING ROD	A66	RELIEF TUBE ASSEMBLY
A23	ECCENTRICITY	A67	POWER CORD & PLUG
A24	SCREW	A70	HANDLE GRIP
A25	BREATH PIPE	A71	TANK
A26	SCREW	A72	CHECK VALVE
A27	OIL INDICATOR SIGHT	A73	HEX NUT
A28	OIL INDICATOR SEAL	A75	FOOT
A29	CRANKCASE COVER	A76	HEX BOLT
A30	COVER SEAL	A77	DRAIN VALVE
A31	OIL SEAL	A79	NUT
A32	CRANKCASE	A80	WHEEL
A33	HEX NUT	A81	BOLT
A35	HEX BOLT	A82	DISCHARGE PIPE ASSEMBLY
A36	OIL PLUG	A85	AIR FILTER
A38	CAPACITOR	A101	PRESSURE SWITCH AND AIR CONNECTOR ASSEMBLY
A41	BEARING 6204		
A42	ROTOR		

RU-EN20180731  
VER:2.1